

SUMMER 2 - 2025/26

# NEWSLETTER



## MATHS

This term, the Hive pupils will develop geometry skills through sport-based contexts such as football pitches, athletics tracks and gym layouts. Angles are linked to passing in football and shooting in basketball, symmetry to movement patterns and sports equipment, and coordinates to team positioning and tactics.

We will be going on some fun trips, which link to our learning, such as Tameside Athletics Stadium and Oxford Park for measuring distance, timing, angles and collecting performance data.

## ENGLISH

Pupils will explore identity, emotions and inner conflict through narrative writing, linked to mental resilience in sport, performance pressure and overcoming challenges in physical activity.

Writing tasks will focus on characters facing "inner monsters," connecting to athlete mindset and resilience under pressure.

This will be supported through outdoor wellbeing and reflection activities at Alexandra Park or Tatton Park, with a focus on resilience and teamwork challenges.

## SCIENCE

This term, pupils will explore genetics through athlete traits and inherited characteristics, interdependence through teamwork in sport and ecosystems, and reactivity through muscle response, energy use and exercise performance.

Practical investigations link to fitness, reaction time and physical performance, including testing activities at Ashton Leisure Centre.

There is also the possibility of working with universities to access additional fitness testing opportunities to support learning and engagement.

# HIVE CLASS



## PSHE

This term, the Hive class will explore healthy friendships, respect, boundaries, consent and positive communication, linked to team sports, coaching relationships and managing pressure in competitive environments. They will also develop an understanding of emotional wellbeing and how relationships can impact mental health and participation in sport and physical activity.

This learning will be supported through structured group activities at Oxford Park, with a focus on teamwork, communication and positive interaction in sport-based tasks.

## CITIZENSHIP

This term, the Hive students will focus on important life skills linked to finance and preparing for adulthood. Topics will include understanding tax, National Insurance, budgeting and the importance of financial awareness in adult life.

Students will begin to develop their understanding of money management and how financial systems impact everyday life and future employment.

## ADVENTURE

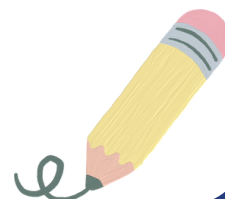
This term, the Hive students will visit a range of local tourist attractions and historic landmarks across Manchester. They will explore places of cultural and historical significance to the city while developing confidence, communication and social skills.

These visits will also encourage positive interaction with peers and staff, providing opportunities to learn in engaging and enjoyable real-world environments.

## ART

The Hive students will create artwork inspired by movement, sport identity and physical expression. Collage work links to sports branding, kits and posters, while assemblage explores recycled sports equipment and structures such as stadiums and gyms.

This is supported by a visit to Portland Basin Museum for inspiration from industrial materials, alongside canal-side sketching along the towpath. Pupils will also use found natural materials, such as magnetic fish finds, which will be cleaned and dried for use in their artwork.





## DIGITAL SKILLS

In Digital Skills, students will continue developing important online safety and technology skills. They will learn how to use online services effectively and understand different verification methods used to keep accounts and personal information secure. Students will also explore how to shop safely online, including how to recognise trusted websites, avoid scams and make secure purchases.

These lessons will support students in building confidence when using technology, helping them to use the internet safely, responsibly and independently in everyday adult life.

## SPORTS

This term, students will complete their final sports coaching assessment. Throughout the year, they have developed a range of coaching and teamwork skills, which they will now apply in a practical setting.

Students will plan and deliver their own sports coaching session, including completing risk assessments, considering health and safety, and organising activities effectively. The final assessment will take place at Oxford Park, where students will have the opportunity to demonstrate their confidence, leadership and communication skills in a real-life environment.

## MUSIC

This term, students will complete a final music production project using Logic Pro. They will create a hypothetical music release and explore how music is distributed through platforms such as Spotify and SoundCloud, as well as other digital distribution services.

Students will demonstrate the professional and creative skills they have developed throughout the year, including music production, creativity, teamwork and communication, applying these within a realistic industry-style project.

## CAREERS (KS4 STUDENTS)

This term, students will be working on ASDAN Module 5, focusing on apprenticeships and employability skills. Students will explore different apprenticeship pathways, research employers and training providers, and develop key workplace skills such as communication, teamwork and professionalism.

The aim of this module is to help learners understand the opportunities available after school or college and prepare them for future employment.



# HIVE CLASS

## FOODWISE

Hive KS4 students will continue working on their Enterprise Project. This term, they will develop their understanding of pricing structures and manufacturing costs to support informed business decisions, including how to calculate profit and consider market demand.

Students will also move into the final stages of production by creating, testing and refining their bottled drink product, applying their enterprise knowledge to a real-world context.

Hive KS3 students will take part in an entertainment planning task alongside organising a charity event project. They will explore key budgeting skills, including event costs, budget-friendly meals and entertainment planning.

This project will help students develop teamwork, creativity and financial planning skills, while gaining an understanding of how successful events are organised. We look forward to seeing students' creativity, teamwork and enterprise skills continue to grow through these engaging projects.

## ENRICHMENT

In Enrichment this term, students will take part in a variety of activities linked to important national and international events.

Pupils will learn about and celebrate Pride Month, Healthy Eating Week, National School Sports Week and World Refugee Day, while also exploring the importance of the International Day for the Abolition of Child Labour.

Activities throughout the term will encourage discussion, teamwork, creativity and reflection, helping students develop their understanding of diversity, wellbeing, equality and global issues.

Students will also take part in a special Sports Day event organised by the Student Council, with the date to be confirmed.

...and plenty more surprises along the way! Keep an eye out on our Facebook page for updates.

## IMPORTANT DATES

Last GCSE exam: Wednesday 10<sup>th</sup> June 2026.

Summer Holiday's - Students last day of the year is Monday 20<sup>th</sup> July 2026.

Students return to school on Wednesday 2<sup>nd</sup> September 2026.

